

Atohm Furtive 1.1

Great sound.....of utmost delicacy !



Thank you for choosing to purchase an Atohm product.

A great deal of effort has gone into designing and manufacturing this product to the highest possible standards and to suit your requirements, whether it be for your stereo, multichannel, Hi-Fi or home theater system. Our products are renowned for their exceptional performances and unrivaled reliability, which will provide you with entire satisfaction for many years to come.

Unpacking

Our speakers are packed in a fabric pouch and are well protected by foam inserts and double layer cardboard packaging. This guarantees the best possible shipping conditions from our assembly line to their final installation in your home.

To avoid any damage when unpacking and installing, we recommend extreme care when handling the speakers. We advise you to conserve the original packaging for any future transportation purposes.

Installation

Once you have decided where to place your speakers (see the paragraph about Positioning), screw the metal bracket onto the wall using a spirit level to ensure that it is straight. The oblong shaped hole in the metal bracket will help you to find the correct horizontal position for your speaker (*Fig. 1*).

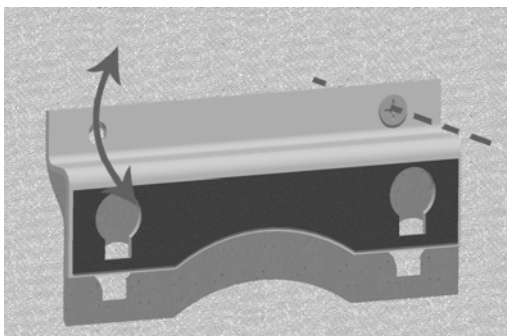


Fig. 1

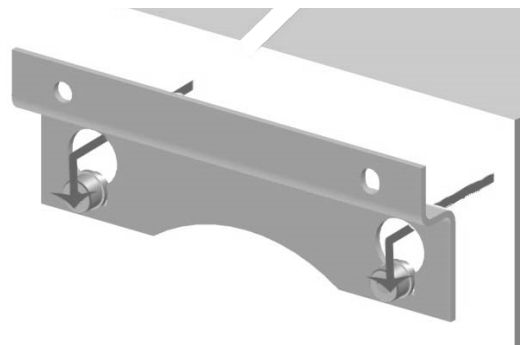


Fig. 2

Your Furtive speaker weighs 4 kg. Be careful to ensure that you use screws and wall plugs that are perfectly adapted to your type of wall, which may be made out of plaster, wood or bricks. We cannot be held responsible for any damage caused by improper wall mounting.

We can also supply an optional aluminum stand if you intend to place your speaker on an existing item of furniture. To mount it, all you need to do is to remove the two screws on the lower rear end of the speaker, adjust the horizontal position using the oblong shaped holes in the stand, and finally, tighten the two screws (*Fig. 3*).

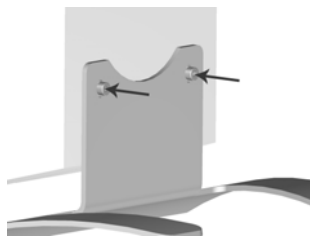
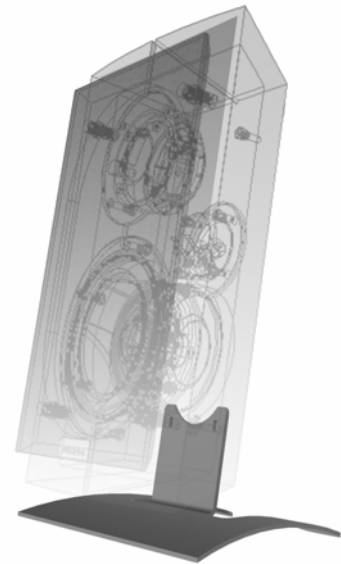


Fig. 3



Positioning the speakers

To ensure perfect quality sound reproduction for music and films, we particularly recommend that you combine our Furtive 1.1 speakers with the **FURTIVE subwoofer** or with **RAFALE V38 subwoofer**.

Loudspeakers in the Furtive range are not magnetically shielded and may cause interference with cathode ray tube screens. They should be positioned at a distance of 60cm from the screen. Plasma or LCD screens do not suffer from this type of interference and so no particular precaution is required as far as speaker position is concerned.

2.1 Configuration

The speakers should form an isosceles triangle with the optimal listening position (*Fig. 4*). Take care not to allow too much distance between the two speakers to maintain a realistic sound stage. As far as possible, the distance A must be less than the distance B. The ideal height of the speakers is between 1 meter and 1.4 meters from the woofer axis. All details concerning the Furtive Sub/ Rafale V38 subwoofer can be found in the user manual.

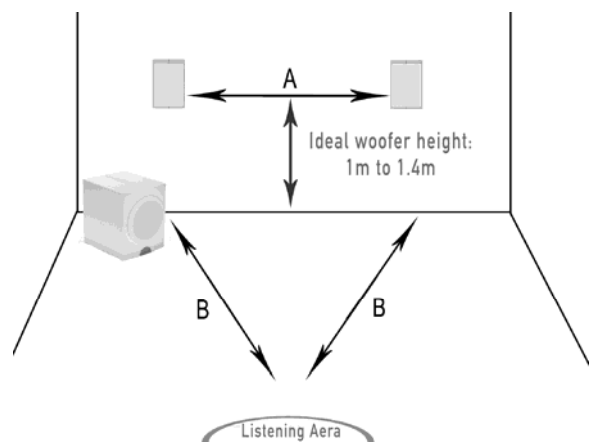


Fig. 4

5.1 Configuration

The two front channels and the subwoofer are positioned in the same way as for the 2.1 configuration. The center speaker is placed either just above your screen or just below, depending on your layout.

The rear speakers should be positioned as close as possible to the listening area; in other words, not too close to and not too far behind the listener to ensure an accurate and balanced sound stage imaging. Ideally, you should try to position them at an angle of 120° with the center speaker (Fig. 5: this angle determines whether the rear speakers are mounted on the side walls or at the rear). If these guidelines are difficult to implement or because the listening room lacks symmetry, you can improve the balance and accuracy of the sound signal by using the level and time delay controls available on many multichannel amplifiers.

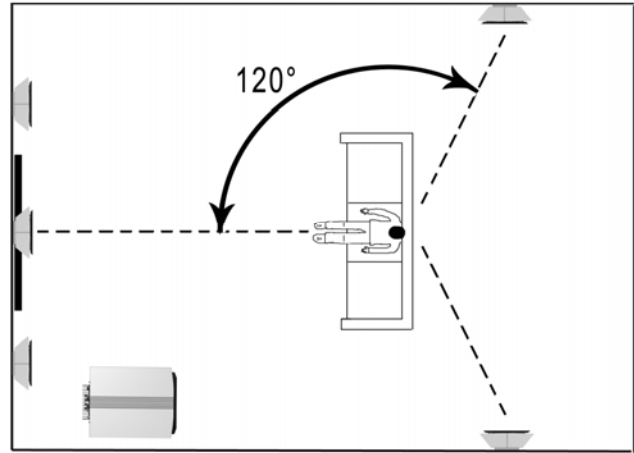


Fig. 5

Breaking-in period

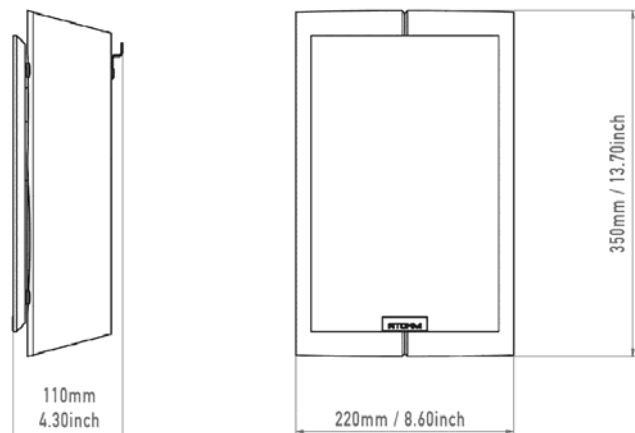
Our speakers require a breaking-in period of about fifty hours for them to produce their best quality performance. After this period the sound message will improve in terms of amplitude and sharpness.

Care and Maintenance

To ensure that the speakers conserve their initial appearance, we recommend that you clean them with a dry microfiber cleaning cloth. Never apply any kind of detergent, solvents or any alcohol based products.

Technical characteristics

2-way closed box speaker
Power handling: 70 Weff
Peak power: 120 W
Impedance: 6 ohms
Sensitivity: 88 dB/2.83V/1M
Frequency response: 80Hz - 30kHz (-3dB)
Bass midrange woofer: LD130CR04
Tweeter: SD20ND04F
Weight: 4 kg / 8.8lbs



This acoustic loudspeaker is in compliance with the RoHS Directive 2002/95/CE on the restriction of use of hazardous substances in consumer electronics.

It also complies with the WEEE Directive 2002/96/CE on electronic waste disposal. Please note that this product must not be disposed of along with ordinary household garbage. When it reaches the end of its life cycle it should be returned to an appropriate recycling facility.



By conforming to the above directives you are contributing towards environmental conservation and protection of natural resources and health.

Warranty conditions

The speakers you have just acquired are covered by a 2 year warranty against defects in material and workmanship, starting from the date of purchase. However, if you return this warranty form duly filled out and accompanied by proof of purchase with your dealers stamp, we will extend this warranty to five years.

Not included in the warranty:

- damage due to inappropriate use (bottoming out, / tearing / warping / exposure to water) or problems resulting from poor installation.
- damage due to power surges (burnt voice coil).
- any component or drive which has been serviced or modified in any way by a third party.



Name:

First Name:

Address:

Products purchased:

Serial N°:

Name of dealer and stamp:

Date of purchase:

