

# TECHNICAL SPECIFICATIONS

# ATOHM®

## [ 1 - 0 ]

Bookshelf speaker                    2 ways bass reflex  
 Power handling:                    70 Wrms  
 Peak power:                         120 W  
 Impedance:                         6 ohms  
 Efficiency:                         88 dB/2.83V/1M  
 Frequency response:               50Hz - 25kHz (-3dB)  
 Midbass unit:                       LD 130 CR04  
 Tweeter:                             SD 20 ND 04F  
 Dimensions:                        320\*180\*230 (mm) / 12.5\*7\*9 (inch)  
 Weight:                               8 kg / 18 lb

## [ 2 - 0 ]

Floorstanding speaker            2+1 ways bass reflex  
 Power handling:                    140 Wrms  
 Peak power:                         250 W  
 Impedance:                         6 ohms  
 Efficiency:                         89 dB/2.83V/1M  
 Frequency response:               42Hz - 25kHz (-3dB)  
 Midbass unit:                       LD 130 CR08 (\*2)  
 Tweeter:                             SD 20 ND 04F  
 Dimensions:                        1044\*180\*200 (mm) / 41\*7\*8 (inch)  
 Weight:                               18 kg / 40 lb

## [ 3 - 0 ]

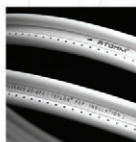
Floorstanding speaker            2+1 ways bass reflex  
 Power handling:                    200 Wrms  
 Peak power:                         350 W  
 Impedance:                         6 ohms  
 Efficiency:                         90 dB/2.83V/1M  
 Frequency response:               33Hz - 25kHz (-3dB)  
 Midbass unit:                       LD 165 CR08 (\*2)  
 Tweeter:                             SD 20 ND 04F  
 Dimensions:                        1110\*220\*300 (mm) / 43\*8.6\*12 (inch)  
 Weight:                               29 kg / 64 lb

## [ C - 1 ]

Center speaker A/V                2 ways bass reflex  
 Power handling:                    180 Wrms  
 Peak power:                         250 W  
 Impedance:                         6 ohms  
 Efficiency:                         89 dB/2.83V/1M  
 Frequency response:               46Hz - 25kHz (-3dB)  
 Midbass unit:                       LD 130 CR08 (\*2)  
 Tweeter:                             SD 20 ND 04F  
 Dimensions:                        170\*470\*300 (mm) / 6.6\*18\*12 (inch)  
 Weight:                               14 kg / 31 lb



The Sirocco series speakers can be associated with "Furtive" speakers, with "Rafale" active subwoofers and with "ZEF" cables. Contact your dealer and ask for more informations.

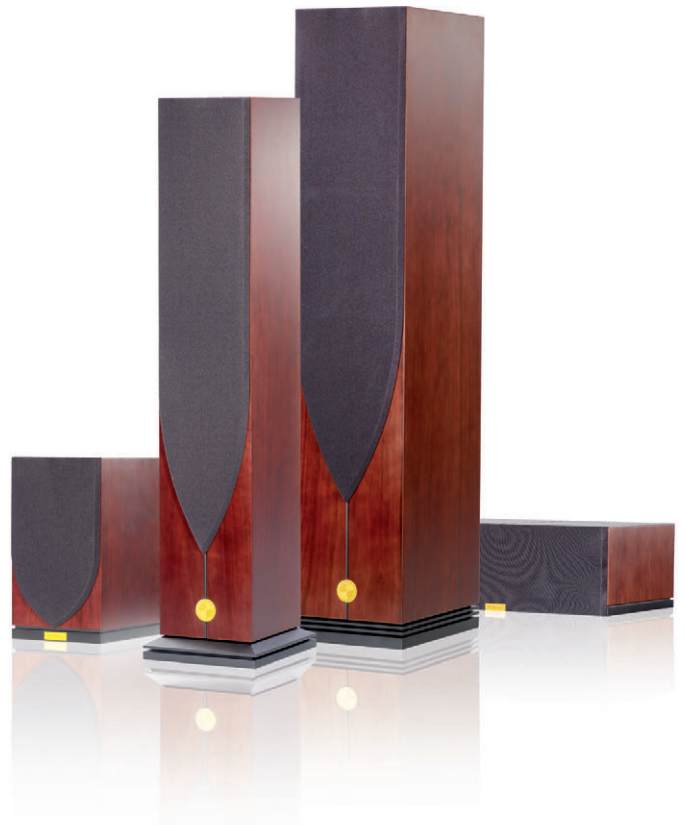


[WWW.ATOHM.COM](http://WWW.ATOHM.COM)



DESIGN BY THIERRY COMTE  
 12RUE DU BREUIL 70150 PIN (FRANCE)  
 TEL: (+ 33) 3 81 47 91 01

Our concern for performance is leading us to constantly improve our products.  
 The present features are subject to modification without any notice.



# [ SIROCCO SERIES ]



# SIROCCO

OUR ULTIMATE GOAL

# SERIES

NOTHING BUT MUSICS



[ 1-0 ]



[ 2-0 ]



[ 3-0 ]

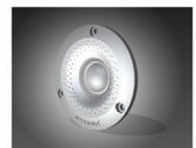
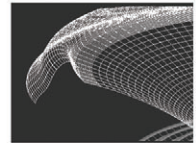


[ C-1 ]

ATOHM<sup>®</sup>'s laboratory is equipped with the finest research and development tools. 3D CAD, FEA dynamic simulations, Klippel<sup>®</sup> FFT measurements and laser interferometry are all products permitting us to innovate, create and control the development of our products

Our passion for music, sound reproduction and for beautiful styling, guides us in the long development of each of our models. The fruit of many years of research, ATOHM driver units and the SIROCCO SERIES are born of our willingness to offer an exceptional price / performance ratio. This stunning range includes ADP<sup>™</sup> technology (Anamorphic Dispersion Patterns) on the tweeters, COPPER RING<sup>™</sup> & LDS<sup>™</sup> (Low Diffraction Surrounding) for the mid bass drivers, TCC<sup>™</sup> (Time Coherent Crossover) regarding the filtering design and SWD<sup>™</sup> (Standing Wave Damper) for the management of internal waves. ( Our exclusive technologies are described on our website: [WWW.ATOHM.COM](http://WWW.ATOHM.COM) )

In listening, our philosophy in sound reproduction translates into natural music, without fatiguing colorations. Whether audiophile or home cinema enthusiast, you will appreciate a listening experience blending smooth sound with great dynamics. You will be seduced by faithful tonal reproduction, as well as a wide and deep soundstage, when the latter is called for.



[ 1-0 ]

This "bookshelf" loudspeaker develops a very beautiful sense of space, air and definition. In regards to its size, the bass registers are reproduced with ease and uncommon extension. Recommended for smaller size rooms, the Sirocco 1.0 can also be associated with the V35 active subwoofer, resulting in a 2.1 speaker system of great authority.

[ 2-0 ]

Elegantly slim, the Sirocco 2.0 offers both a full and detailed reproduction. Bass frequencies are controlled and rhythmic. The midrange and highs are particularly well defined without sounding harsh or unnatural. The reproduced soundstage is both homogeneous and of exemplary depth. This speaker will easily integrate into all small to midsize rooms.

[ 3-0 ]

The Sirocco 3.0 is the flagship of the Sirocco series. This model is characterized by quick extended bass, and great power handling in tandem with noticeable dynamics. The 3.0 also distinguishes itself by its excellent definition, as well as its holographic sound staging. This speaker is ideal for all music lovers who listen in midsize to large rooms.

[ C-1 ]

The Sirocco C-1 center channel reproduces dialogues and cinema effects with great precision and realism. It was conceived to perfectly integrate with any of the other speakers of the Sirocco series.